

St. Brigid's abridged guidance for
learners/parents & carers
for Qualification Wales
GCSE/GCE and
Welsh Baccalaureate
Appeals Process 2021



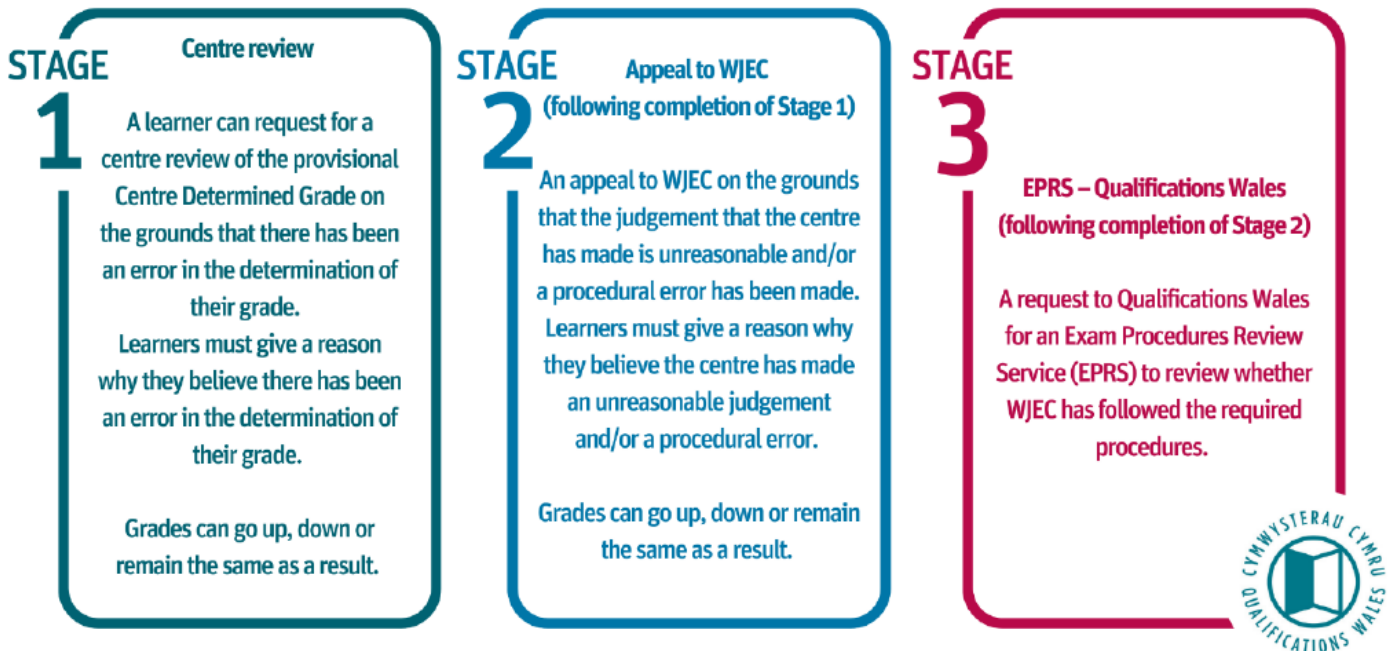
Introduction

This year's alternative approach to awarding qualifications through centre determined grades has required a new approach to reviews and appeals so that there is a fair and meaningful process for learners. The approach to determining grades puts teachers, lecturers and school and college leaders at the heart of delivering a system that will enable learners to progress. Schools and colleges also have a key role to play in making sure every learner has access to fair review and appeals processes this year.

More detailed guidance with respect to the Appeals Process can be found at <https://www.qualificationswales.org>

Appeals – Stages System

There are three stages in this year's approach.



In brief:

- The centre (St. Brigid's School) review allows learners to request a review where they consider an error has been made in the determination of their grade – the focus is on the overall grade not on the marking of individual assessments.

There is no expectation that centres remark assessments.

- The centre review is an opportunity for the school or college to check they have not made an error in the determination of the grade.
- Learners should briefly explain the nature of the error when requesting a centre review. WJEC will be providing templates for centres and learners to use.
- The centre review is not an opportunity for learners to try and improve grades that have been determined fairly in accordance with the centre's assessment and quality assurance processes and are supported by the evidence and the decision-making record.
- A stage 2 appeal to WJEC can be made after completion of the centre review if the learner still believes there has been a procedural error or that the grade is unreasonable.
- WJEC will only uphold an appeal on the grounds of unreasonable academic judgement at Stage 2 if it is well outside the bounds of reasonable academic judgement and that the evidence cannot reasonably support the grade.
- **Grades can go up or down, or stay the same, following the centre review and appeal.**

The Stage Process – Simplified

Our school have applied internal quality assurance arrangements and WJEC has undertaken external quality assurance of arrangements for summer 2021. Errors however may occasionally occur, and you have an opportunity to ask to check your grade(s) if you **genuinely** believe that an error has been made in determining your grade. **You are not able to negotiate which evidence is included** in the range of evidence used to determine your grades.

Provisional (final grades issued by WJEC) grades issued to the learner on June 21st 2021

Do you consider that an error has been made in one or more of their grades (**not individual assessments**)?

No

No further action

Yes

You have 48 hours from receipt of your provisional grade to request the decision record for the subject(s) to consider the information.

Do you consider that an error has been made in your **grade(s)**?

No

No further action

Yes

You have 5 working days to request a review of the information to check for errors identified using the Request Form (on the school website). **Requests after this deadline will not be considered.**

Has an error been identified?

No

School informs you of the outcome, gives you an opportunity to request their marked evidence and provides information about the WJEC Stage 2 appeal process. There is no further opportunity for a school-based review.

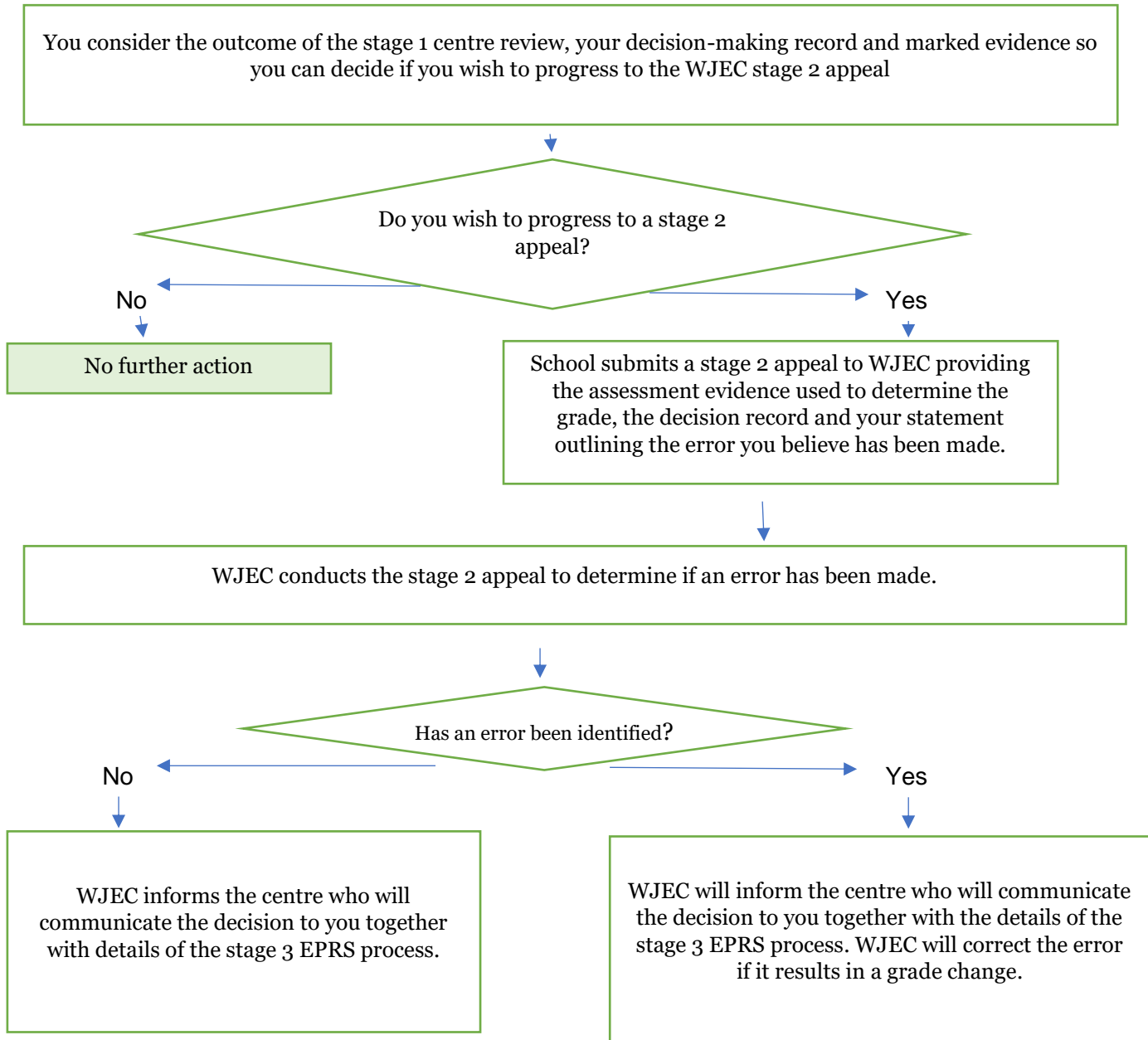
Yes

School corrects the error and informs you of the outcome. School contacts WJEC to amend the provisional grade (if already submitted). You will be informed of the WJEC stage 2 appeals process.

You may also request a stage 2 appeal to WJEC if you consider that an error persists following the outcome of stage 1 – the centre review.

An appeal may also be made if you, following a discussion with the school, considers that WJEC has made an error.

For example, St. Brigid's School confirms that they submitted a provisional C grade, and the grade issued by WJEC was a D.



The final stage of the appeals process is the EPRS

The EPRS will check whether WJEC has complied with its own procedures and Qualifications Wales' requirements. EPRS is available for GCSE, AS/A Level and Skills Challenge Certificate qualifications.

The EPRS will not review whether the centre has complied with its own policies or procedures or those set by WJEC for it to follow as this part of the appeals process will have taken place at stage 2.

As in any other year, the EPRS will not review the accuracy of the grading decisions and will not change any grades.

Bias and discrimination

There are no separate grounds for appeal on the basis of bias and discrimination this year. If learners are concerned the decision on their grade has been affected by bias and discrimination, they should appeal on the basis that there has been an error in the determination of the grade, giving the reasons why they believe the grade is not an accurate reflection of the standard of their work.

Dates for your diary

21st June 2021 – Provisional Grades shared with learners.

21st – 29th June 2021 – Stage 1 Appeals Process window

14th June – 2nd July 2021 – School submits Centre Determined Grade to WJEC